



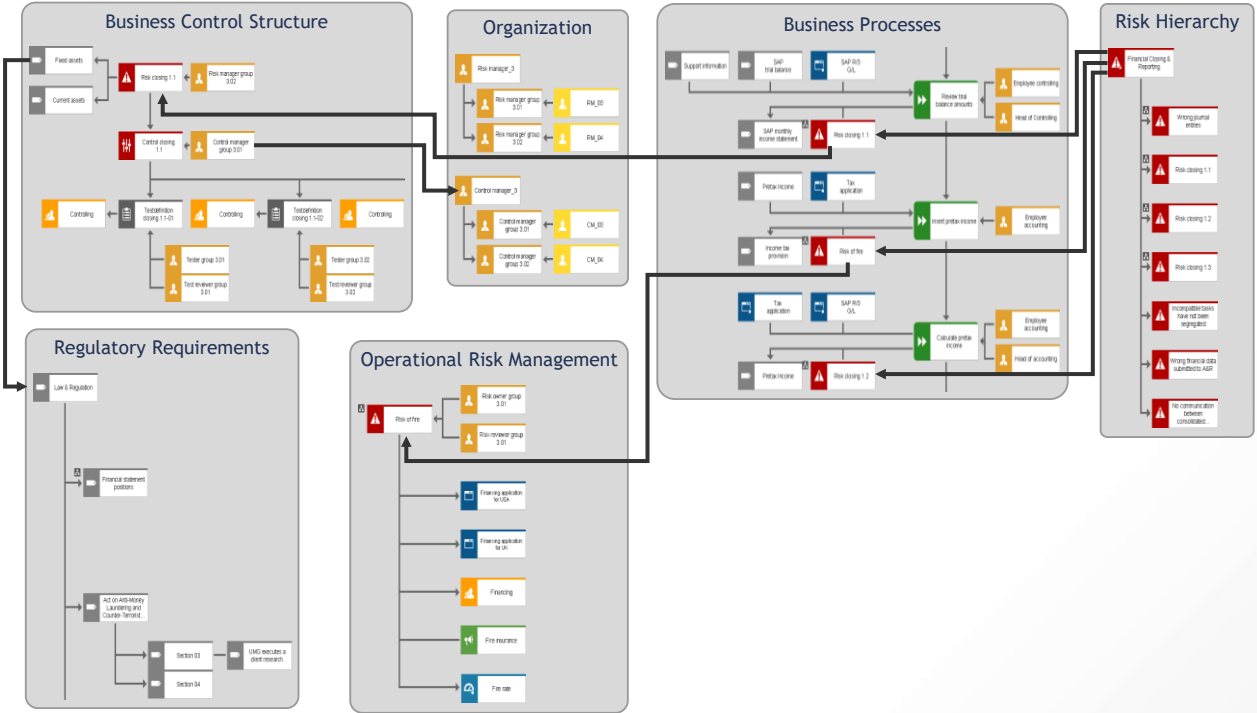
# ARIS

## SUPPORTING THE GRC WORK

Jesper Loell, Solution Architect



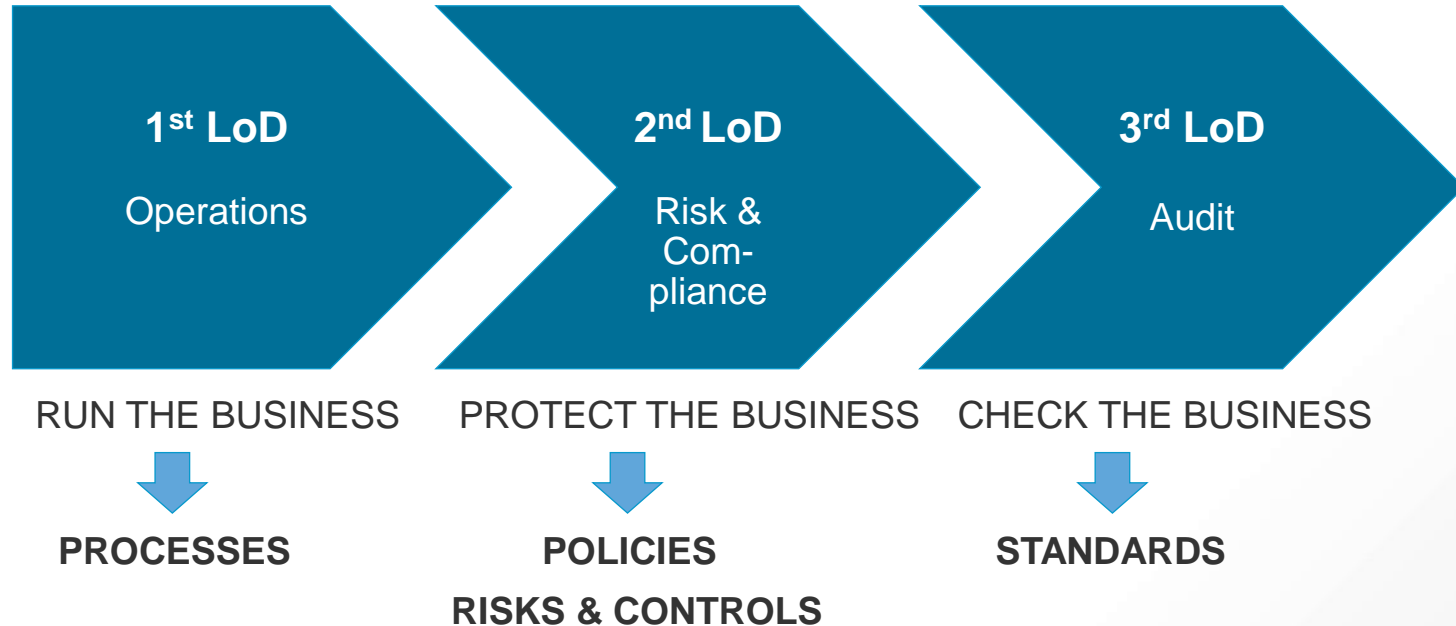
# MAP LAW & REGULATION



# PROCESS-BASED GRC MANAGEMENT



# ERM 2.0 WILL FACILITATE A SHIFT IN RESPONSIBILITY





# Documented GRC

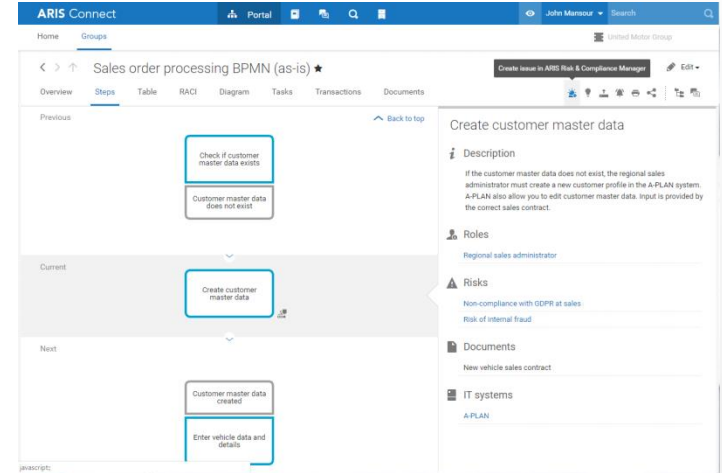
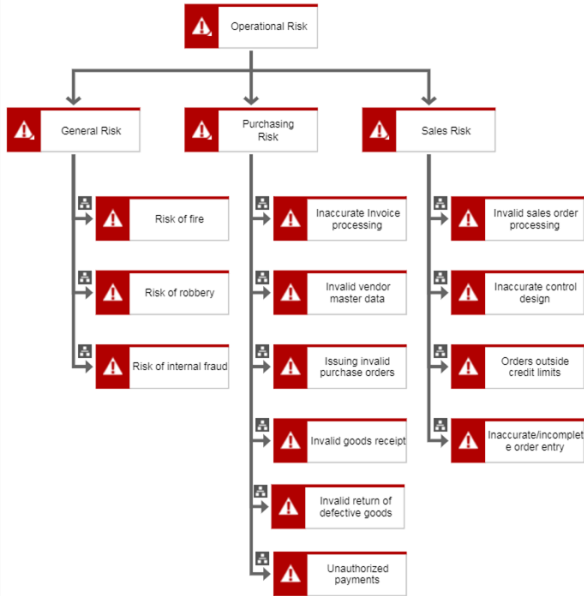
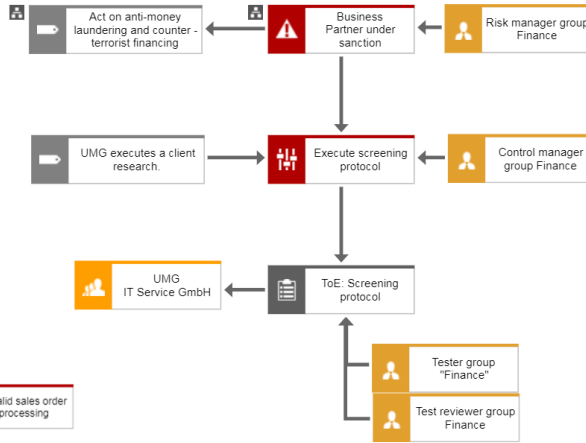
## Automating the GRC Work

### Plan and Execute the Audit

# MAPPING RISK & COMPLIANCE



# DOCUMENTED GRC





# AUTOMATING THE GRC WORK



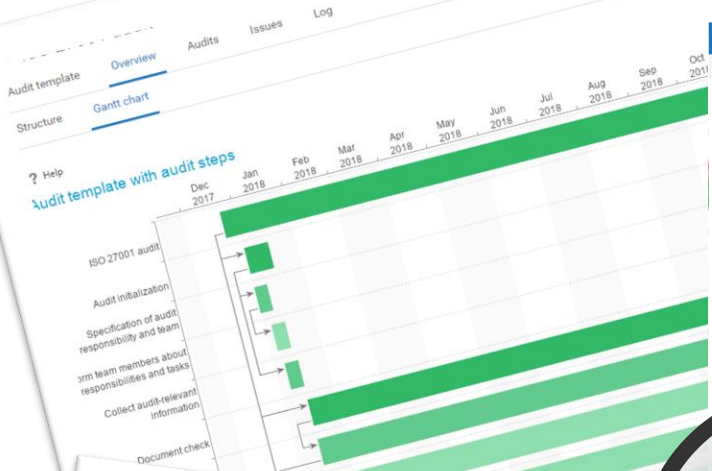
# PERFORMING THE GRC WORK

The screenshot displays the ARIS Connect interface for Global GRC Management. The dashboard includes several key metrics:

- Number of relevant risks:** 12
- Status of risk assessments:** A donut chart showing 50% completed and 25% in progress.
- Number of relevant control tests:** 15
- Status of control tests:** A donut chart showing 20% completed.
- Risk exposure:** A heatmap with axes for Damage (Low to High) and Frequency (Low to High).
- GRC issues:** A table listing issues with columns for ID, Priority, and Issue.

The detailed view shows a risk assessment for "Business Partner under sanction" with the following configuration:

- Assessment type:** Qualitative
- Extent of damage:** High
- Occurrence frequency:** Please select (dropdown menu is open showing Low, Average, High)
- Reduced extent of damage:** Please select
- Reduced occurrence frequency:** Please select
- Qualitative risk score:** (input field)
- Reduced qualitative risk score:** (input field)
- Remark:** (text area)



Evaluation > Risk assessment per Process

Filter: Current filter

Environment \* UMG (United Motor Group)

Impact type \* Environmental & health impact (11/05/2018 - Today)

Hide outdated assessments: No

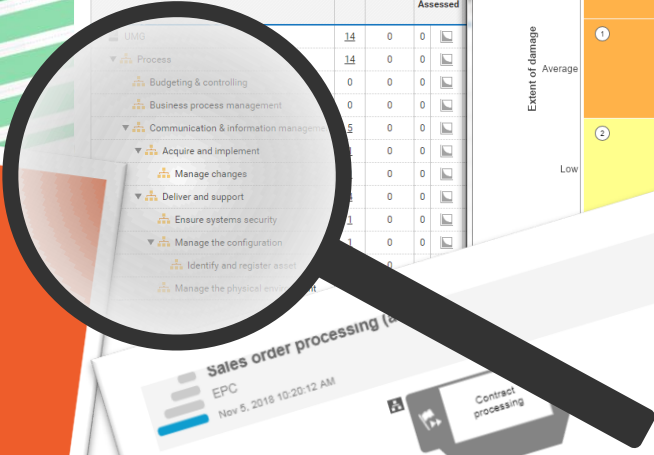
Assessment from: 01/01/2018 to 01 January

Expand all Collapse all Generate PDF Generate Excel Help

Structure	Risks	Assessed	Assessed	Min
UMG	14	0	0	
Process	14	0	0	
Budgeting & controlling	0	0	0	
Business process management	0	0	0	
Communication & information management	5	0	0	
Acquire and implement	0	0	0	
Manage changes	0	0	0	
Deliver and support	1	0	0	
Ensure systems security	1	0	0	
Manage the configuration	1	0	0	
Identify and register assets				
Manage the physical environment				

Risk assessment per 'Process' heatmap for UMG:

Extent of damage	High	Average	Low
High	Orange	Orange	Orange
Average	Orange (1)	Orange	Orange
Low	Yellow (2)	Orange	Orange



**Processing Activities HR**

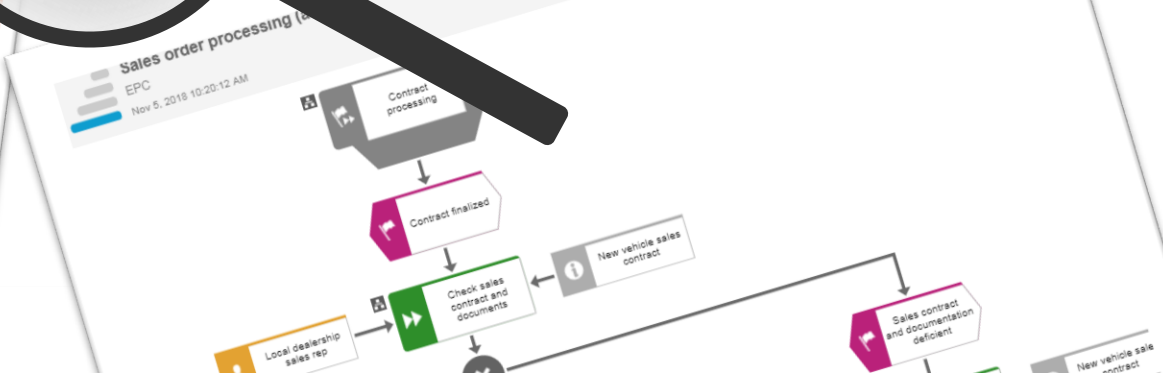
Function Description

**Key Data**

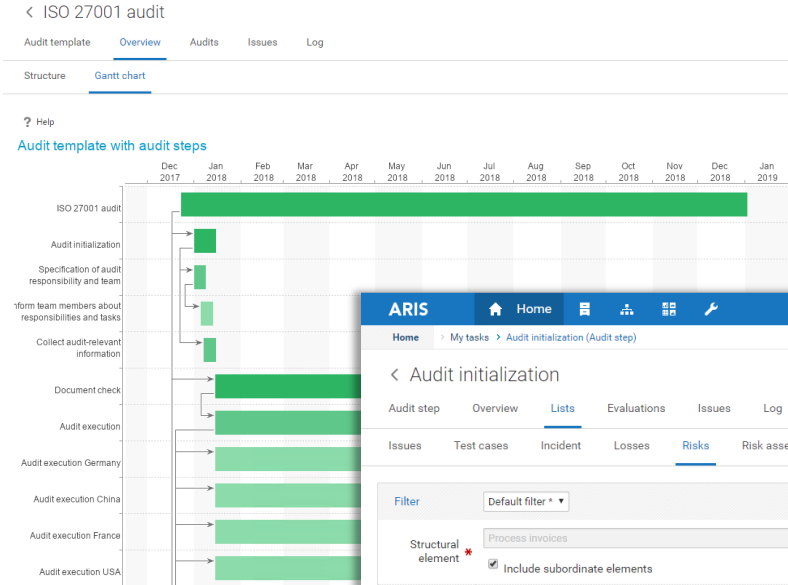
Description/Definition

**Function Data**

Full name



# PLAN AND EXECUTE THE AUDIT



ARIS Home

Home > My tasks > Audit initialization (Audit step)

< Audit initialization

Audit step Overview Lists Evaluations Issues Log

Issues Test cases Incident Losses Risks Risk assessment

Filter Default filter

Structural element Process invoices

Include subordinate elements

Name

Open Generate report Mark Help

Scope	Name	Description	Process	Function
<input type="checkbox"/>	Process invoices	<span style="color: red;">▲</span> Inaccurate Invoice processing	Invoice processing is inaccurate (incorrect calculations, incorrect pricing) and incomplete	Process invoices

ARIS Evaluation Kim Austin

Evaluation > Risk assessment per Process

Filter Current filter

Environment UMG (United Motor Group) Assessment date from 01/01/2018 to 01. January

Impact type Please select Structural element All

Hide outdated assessments No Calculation Overall statistics

Expand all Collapse all Generate PDF Generate Excel Help

Structure	Risks	Quantitative assessments												Risk score			
		Assessed	Assessed	Expected losses	Assessed	Expected losses	Assessed	Expected losses	Assessed	Expected losses	Assessed	Expected losses	Assessed		Expected losses		
▼ UMG	14	0	0	0	0	0	0	0	0	0	0	0	0	0	0	0	0
▼ Process	14	0	0	0	0	0	0	0	0	0	0	0	0	0	0	0	0
▲ Budgeting & controlling	0	0	0	0	0	0	0	0	0	0	0	0	0	0	0	0	0
▲ Business process management	0	0	0	0	0	0	0	0	0	0	0	0	0	0	0	0	0
▲ Communication & information management	5	0	0	0	0	0	0	0	0	0	0	0	0	0	0	0	0
▼ Acquire and implement	1	0	0	0	0	0	0	0	0	0	0	0	0	0	0	0	0
▲ Manage changes	1	0	0	0	0	0	0	0	0	0	0	0	0	0	0	0	0
▼ Deliver and support	4	0	0	0	0	0	0	0	0	0	0	0	0	0	0	0	0

Environment UMG (United Motor Group)

Risk description

Total entries: 1



## Documented GRC

Add GRC context to existing content

## Automating the GRC Work

Automate and schedule workflows

## Plan and Execute the Audit

Full overview of execution and relevant data

